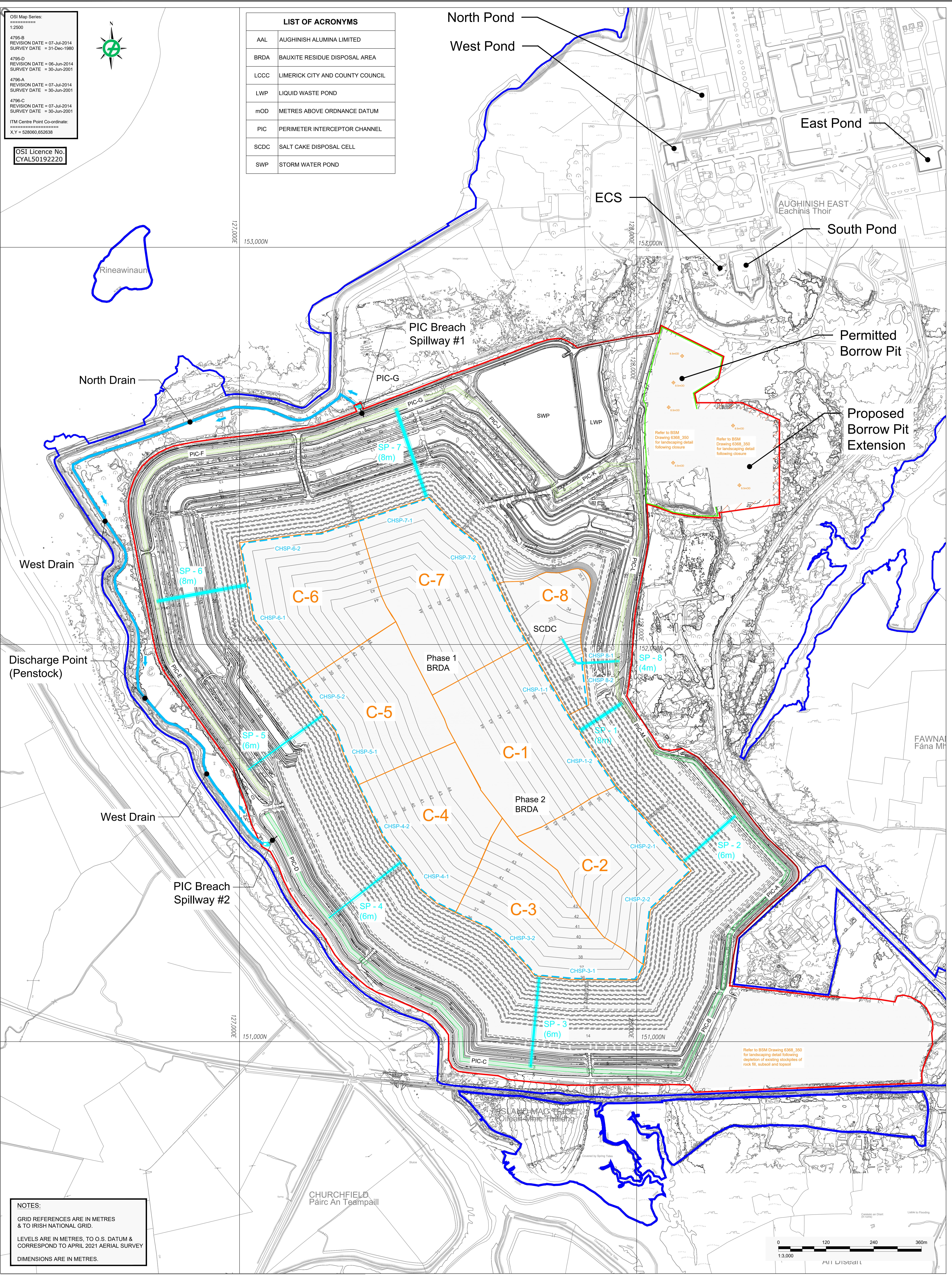


OSI Map Series:
1:2500
4795-B
REVISION DATE = 07-Jul-2014
SURVEY DATE = 31-Dec-1980
4795-D
REVISION DATE = 06-Jun-2014
SURVEY DATE = 30-Jun-2001
4795-A
REVISION DATE = 07-Jul-2014
SURVEY DATE = 30-Jun-2001
4795-C
REVISION DATE = 07-Jul-2014
SURVEY DATE = 30-Jun-2001
ITM Centre Point Co-ordinate:
X,Y = 528960,652838



LIST OF ACRONYMS	
AAL	AUGHINISH ALUMINA LIMITED
BRDA	BAUXITE RESIDUE DISPOSAL AREA
LCCC	LIMERICK CITY AND COUNTY COUNCIL
LWP	LIQUID WASTE POND
mOD	METRES ABOVE ORDNANCE DATUM
PIC	PERIMETER INTERCEPTOR CHANNEL
SCDC	SALT CAKE DISPOSAL CELL
SWP	STORM WATER POND

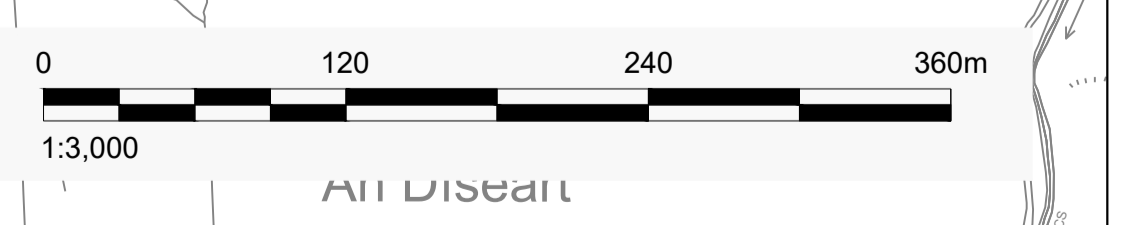
OSI Licence No.
CYAL50192220



NOTES:
GRID REFERENCES ARE IN METRES & TO IRISH NATIONAL GRID.
LEVELS ARE IN METRES, TO O.S. DATUM & CORRESPOND TO APRIL 2021 AERIAL SURVEY
DIMENSIONS ARE IN METRES.

LEGEND	
	AAL OWNERSHIP BOUNDARY
	APPLICATION BOUNDARY
	EXISTING GROUND CONTOUR (mOD) APRIL 2021
	PERMITTED BORROW PIT BOUNDARY
	PROPOSED BORROW PIT EXTENSION FOOTPRINT
	CATCHMENT BOUNDARY
	SPILLWAY LOCATION (4m, 6m & 8m WIDTHS)
	PROPOSED DISCHARGE ROUTE AT CLOSURE
	WETLANDS IN PIC - DISCHARGE AT PIC BREACH SPILLWAY #1
	WETLANDS IN PIC - DISCHARGE AT PIC BREACH SPILLWAY #2

CLIENT	PROJECT
AUGHINISH ALUMINA LTD.	BRDA RAISE PLANNING APPLICATION DRAWINGS
CONSULTANT	TITLE
YYYY-MM-DD 2021-Nov-30	Proposed Conditions: BRDA Closure Layout at Stage 16 (see Drawing 12-series for sections and details)
DESIGNED BK	PROJECT NO. 20143076
PREPARED POB	DRAWING NO. 10
REVIEWED BK	REV. A
APPROVED BK	SCALE 1:3,000 A0



IF THIS MEASUREMENT DOES NOT MATCH WHAT IS SHOWN, THE SHEET SIZE HAS BEEN ADJUSTED FROM ISO/A4